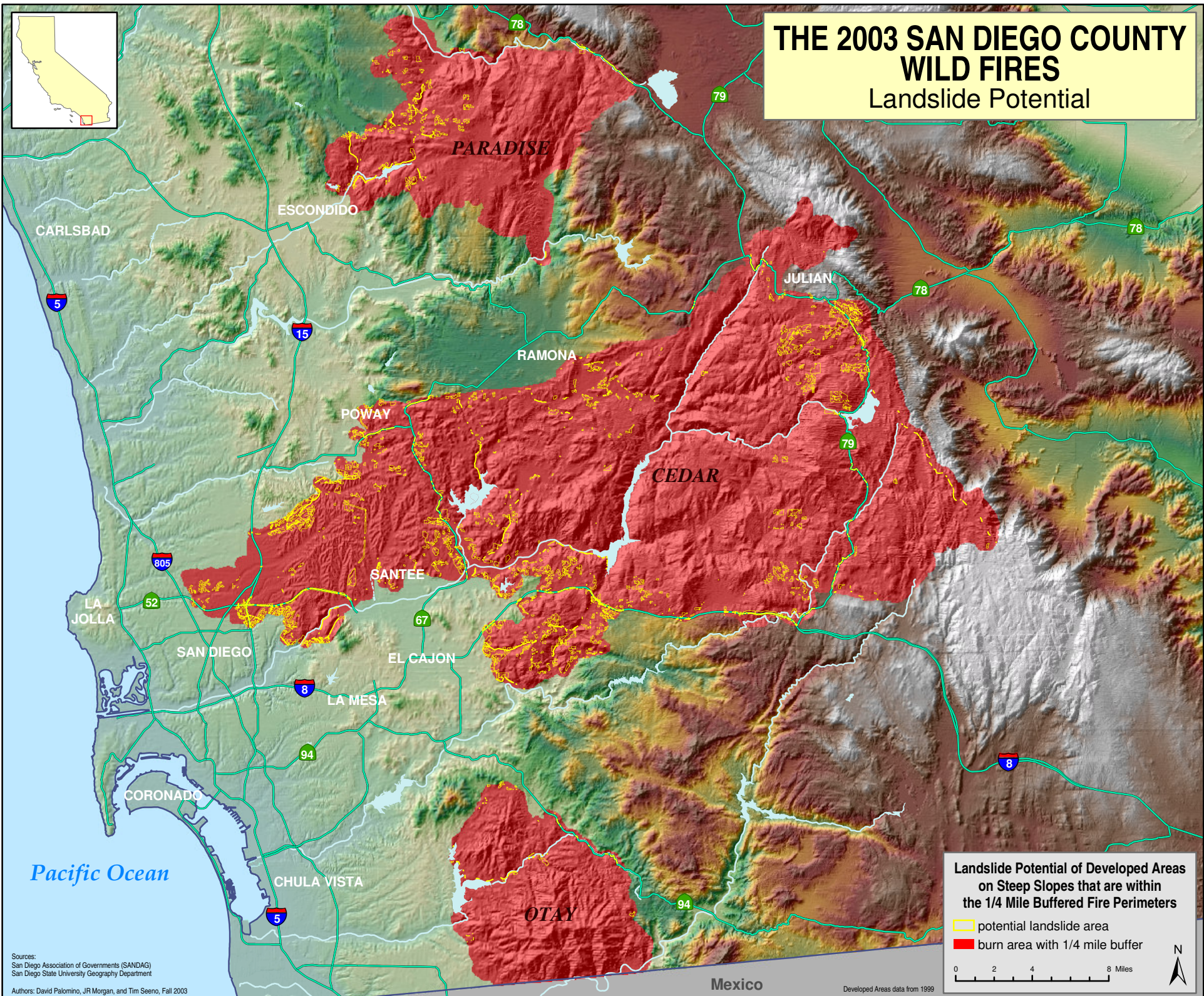


THE 2003 SAN DIEGO COUNTY WILD FIRES

Landslide Potential



Landslide Potential of Developed Areas on Steep Slopes that are within the 1/4 Mile Buffered Fire Perimeters

potential landslide area
burn area with 1/4 mile buffer

0 2 4 8 Miles

Sources:
San Diego Association of Governments (SANDAG)
San Diego State University Geography Department
Authors: David Palomino, JR Morgan, and Tim Seeno, Fall 2003

Developed Areas data from 1999