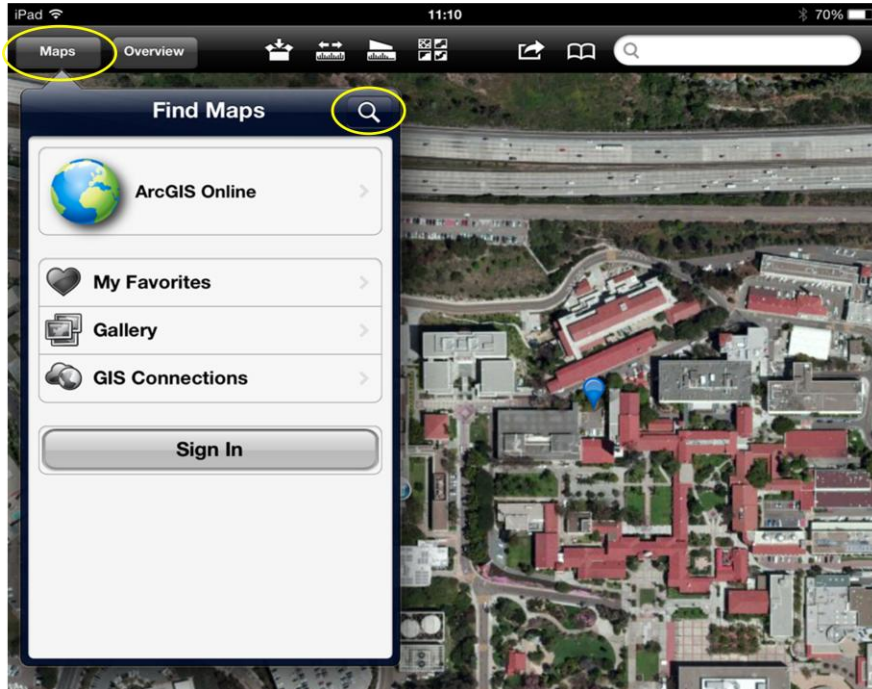


# Test For Ipad In Fieldwork Trees

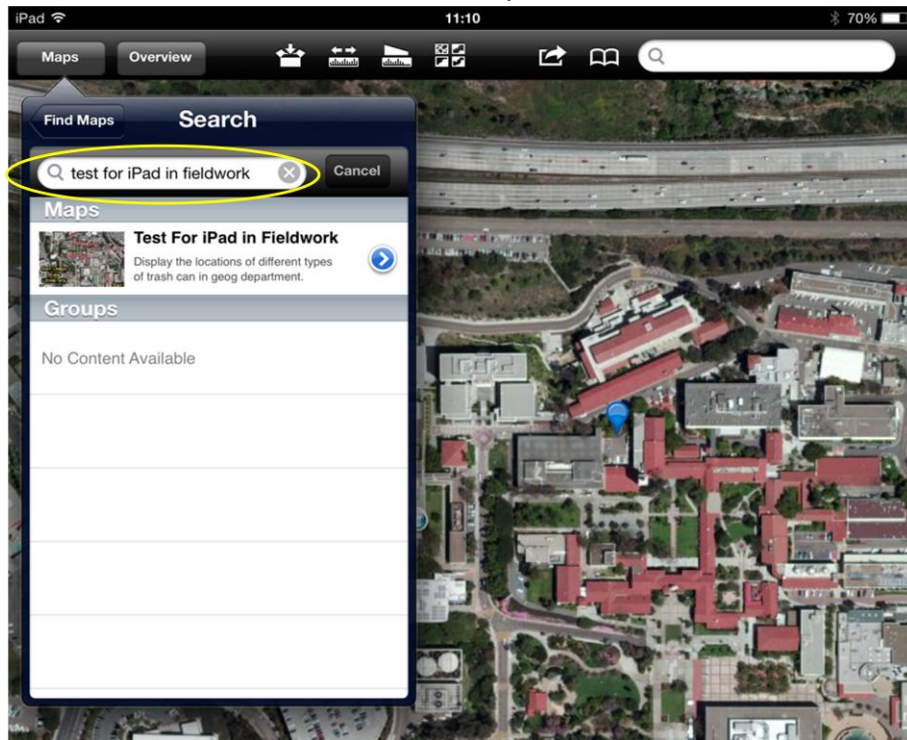
1. Launch ArcGIS App on your iPad or smartphone.



2. Click the “Maps” button at the top-right corner and then click the magnifier icon to search map.

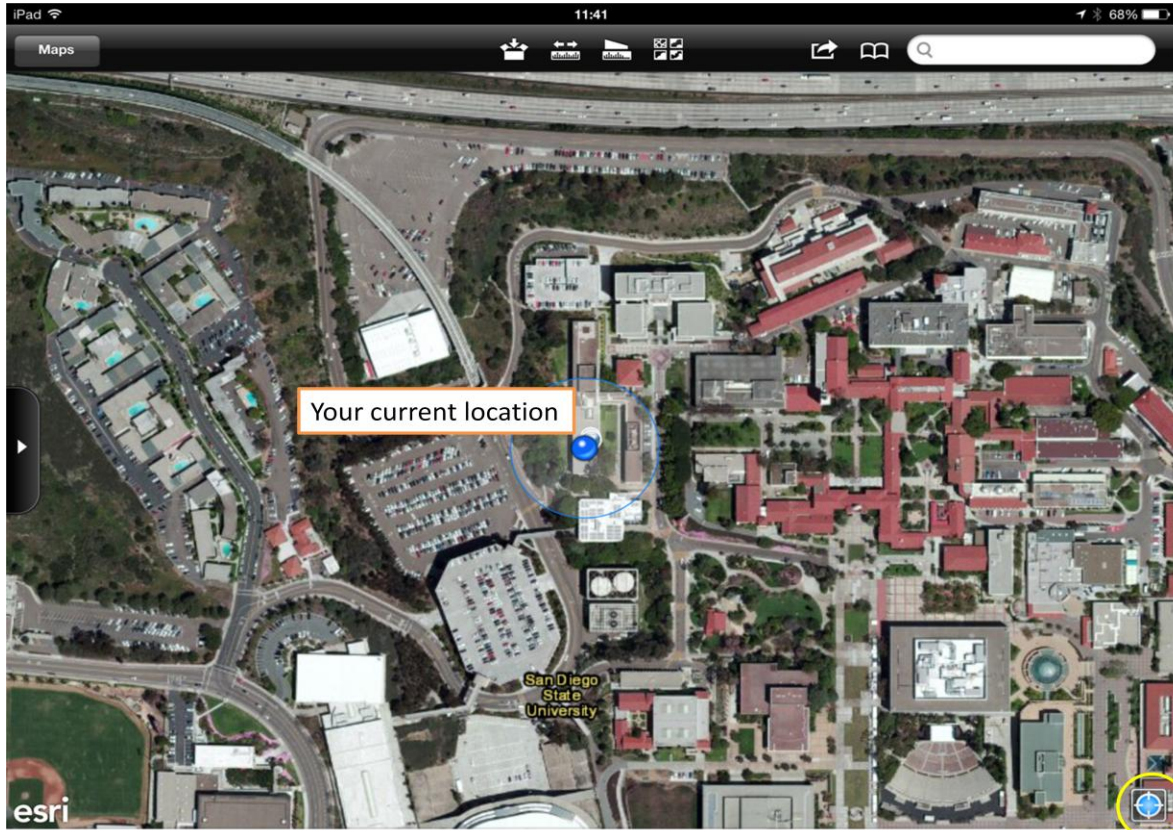


3. Enter “test for ipads in fieldwork trees” to search map and click the search result.

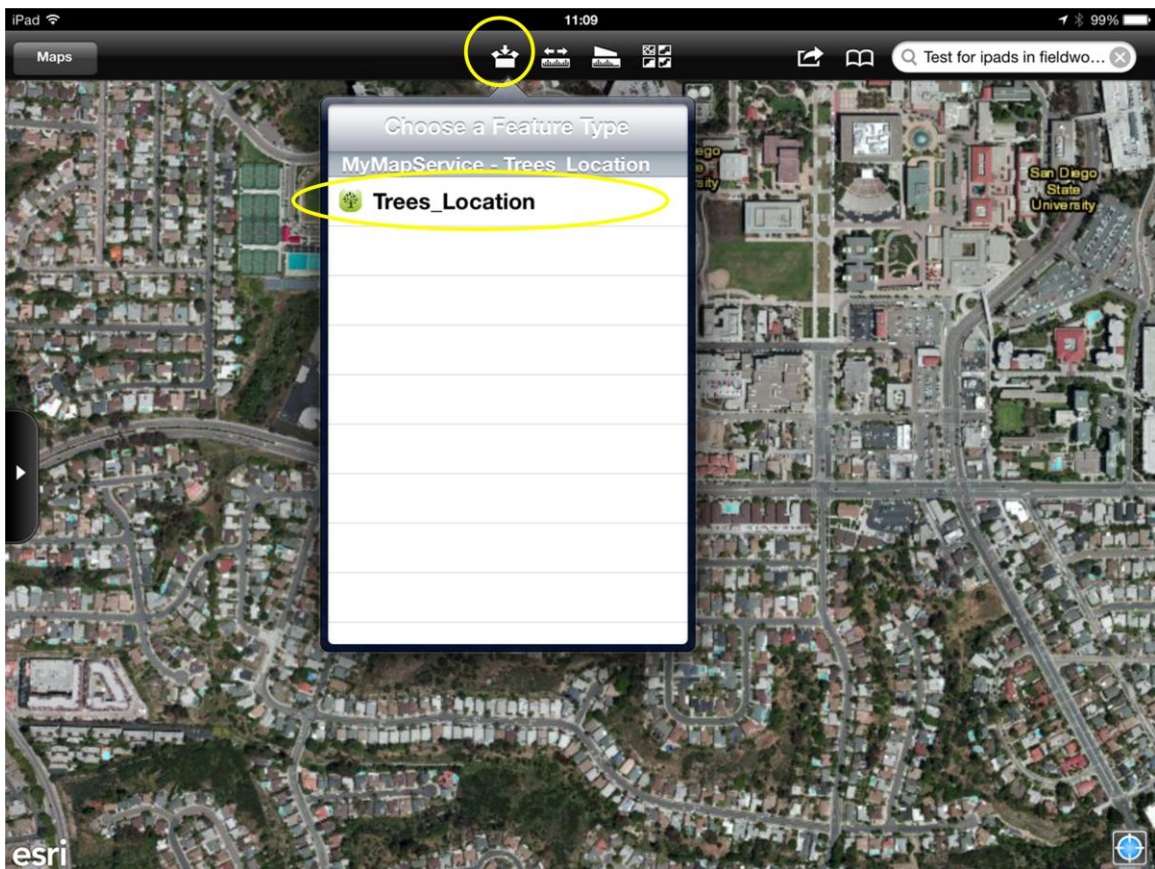




4. You will see a map like the one below. Click the target icon at the bottom-right corner. This will show your current location. Bring your iPad and find a plant near you (outside the building).

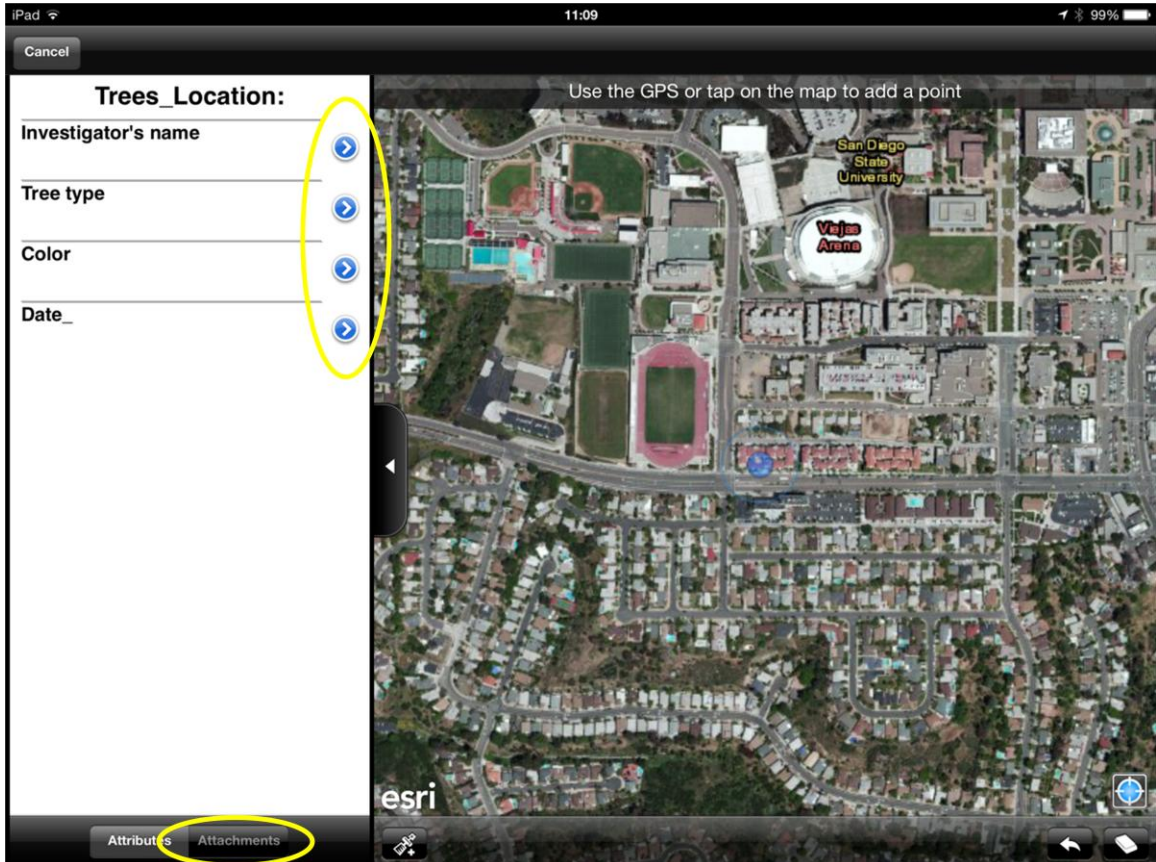


5. When you found a tree, click the box icon at the top toolbar and then click "Trees\_Location" at the menu.

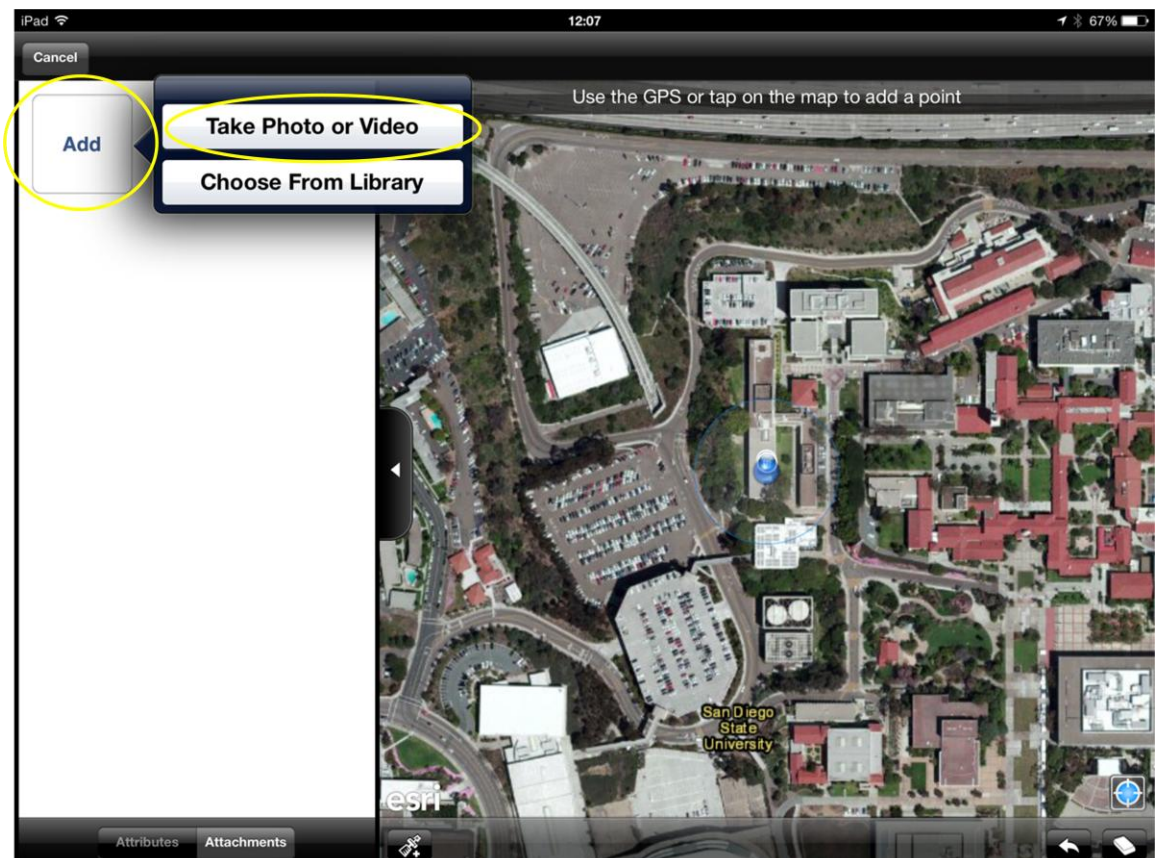




6. You will see a list of attributes at the left side panel. Please edit each attribute by clicking blue arrow. After finishing editing, click “Attachment” button at the bottom of the panel.



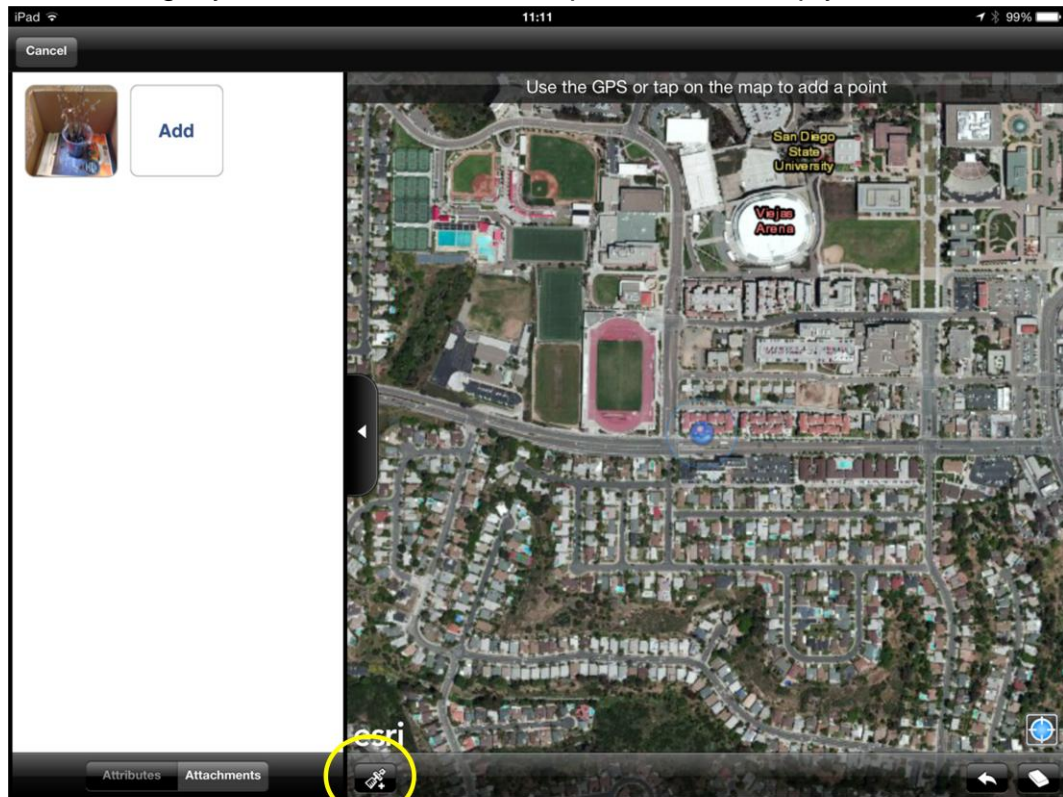
7. Click “Add” button and then select “Take Photo or Video”. After you take picture, choose “Use Photo”







8. Now you have finished editing attributes and taking picture. You will click the icon at the bottom toolbar to get your location. A small red point will show up your location.



9. Finally, click “Finish” green button at the top-right corner. Congratulations! You’ve finished all the fieldwork exercise. Please go back to the classroom to finish the whole test.

