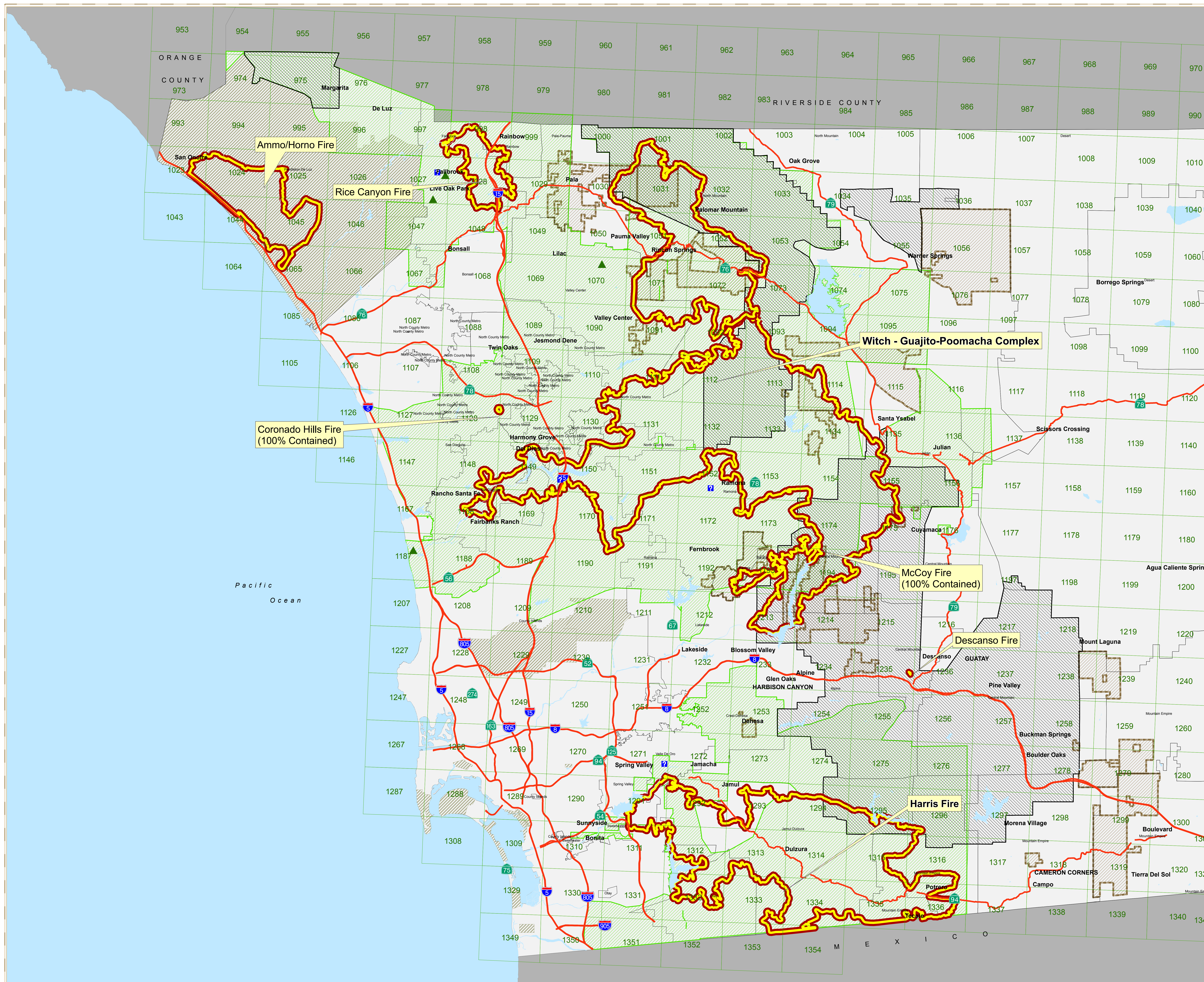


San Diego County
1100 Hrs UPDATE
October 31, 2007

Perimeters from:
CAL Fire
MODIS Satellite Data
WebEOC information,
City of San Diego Fire.

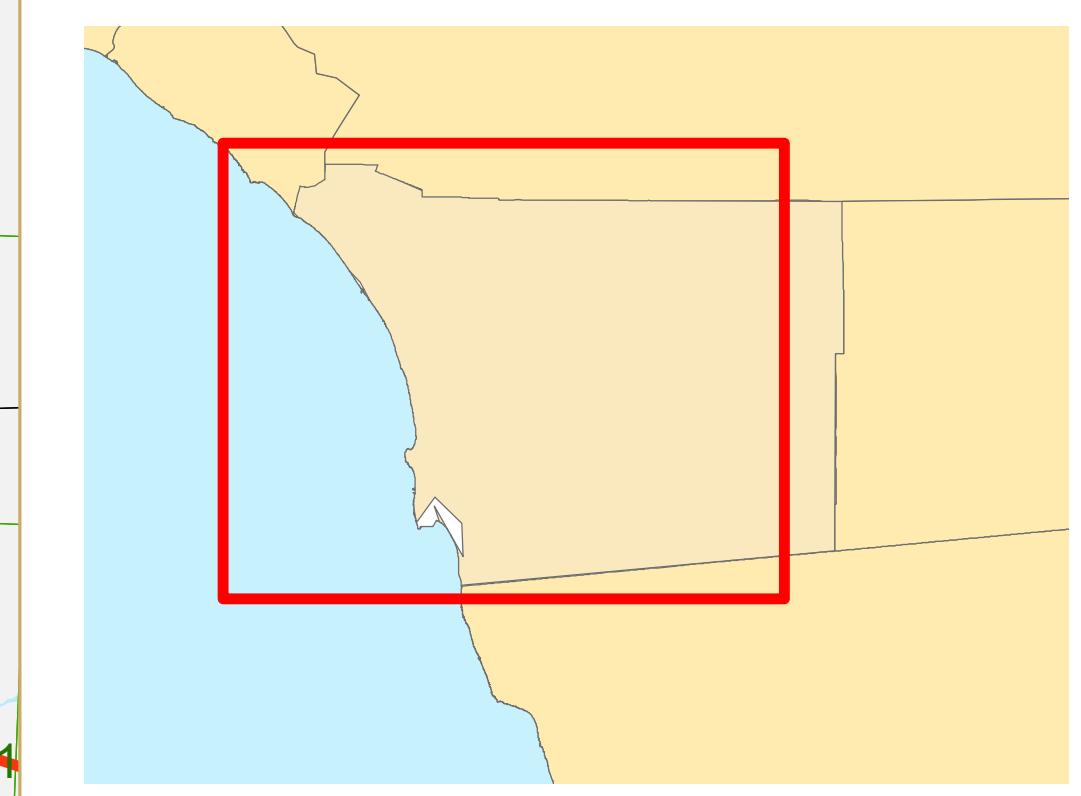
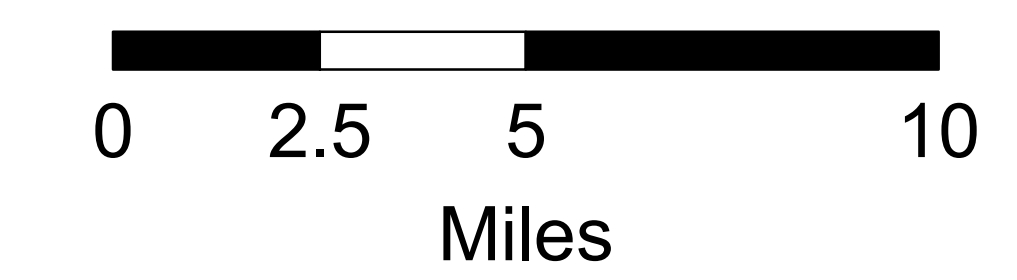


- Local Assistance Centers
- Shelters
- Freeways
- Thomas Bros. Pages
- Lakes
- Approx. Fire Perimeters
- Cleveland National Forest
- Approx. Re-Opened Areas

*Cleveland National Forest and BLM lands remain closed.

Data Source: SanGIS

Disclaimer: This map is provided without warranty of any kind, either expressed or implied, including but not limited to, the implied warranties of merchantability and fitness for a particular purpose. This product may contain information from the SANDAG Regional Information System, which cannot be reproduced without written permission of SANDAG. This product may contain information which has been reproduced with permission granted by Thomas Brothers Maps. Copyright SanGIS. All Rights reserved.



Map Date: October 31, 2007
FILE: P-658-1100HrsIncidents

