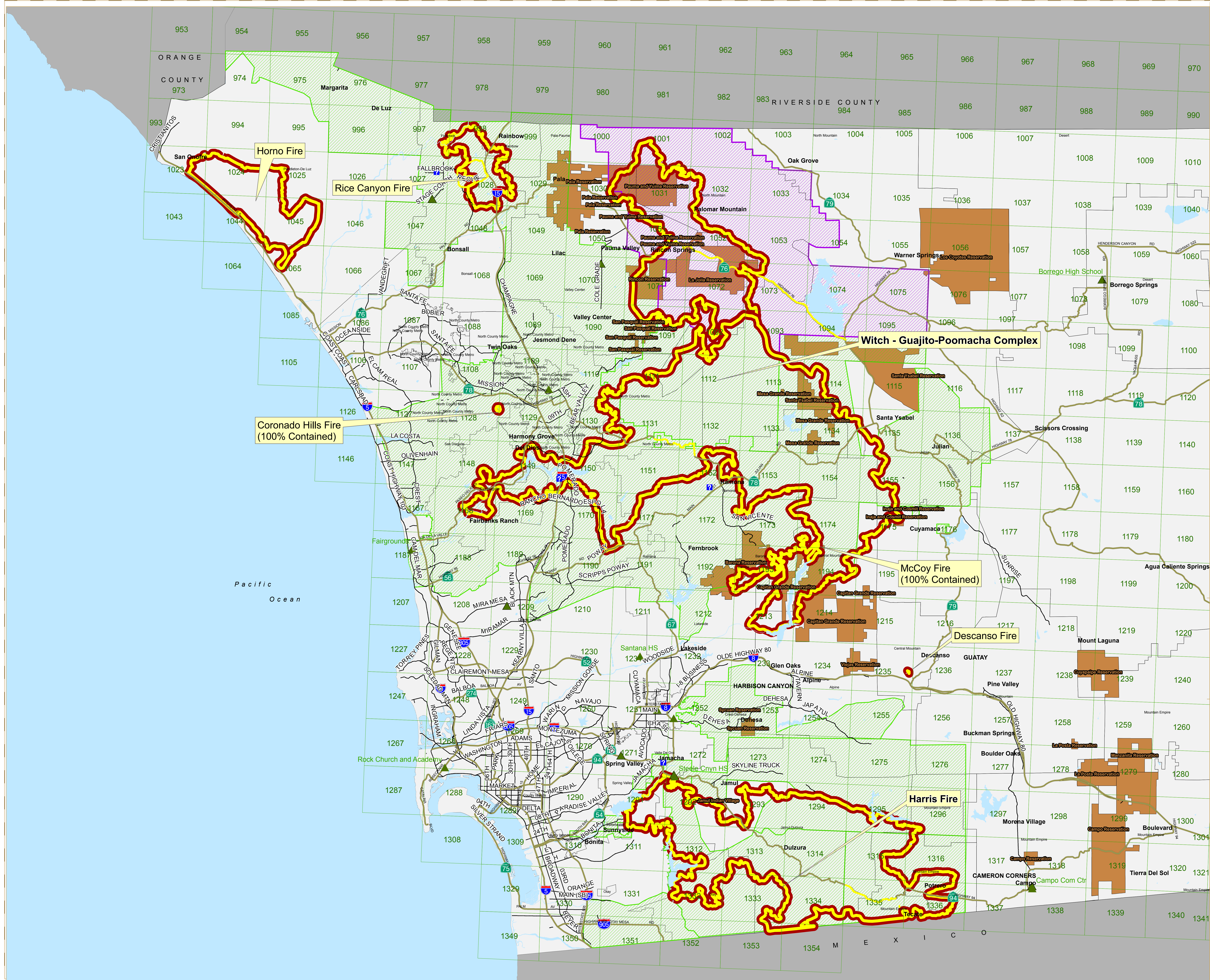


**San Diego Active Fires
Last 24 Hours
0900 Hrs UPDATE
October 28, 2007**

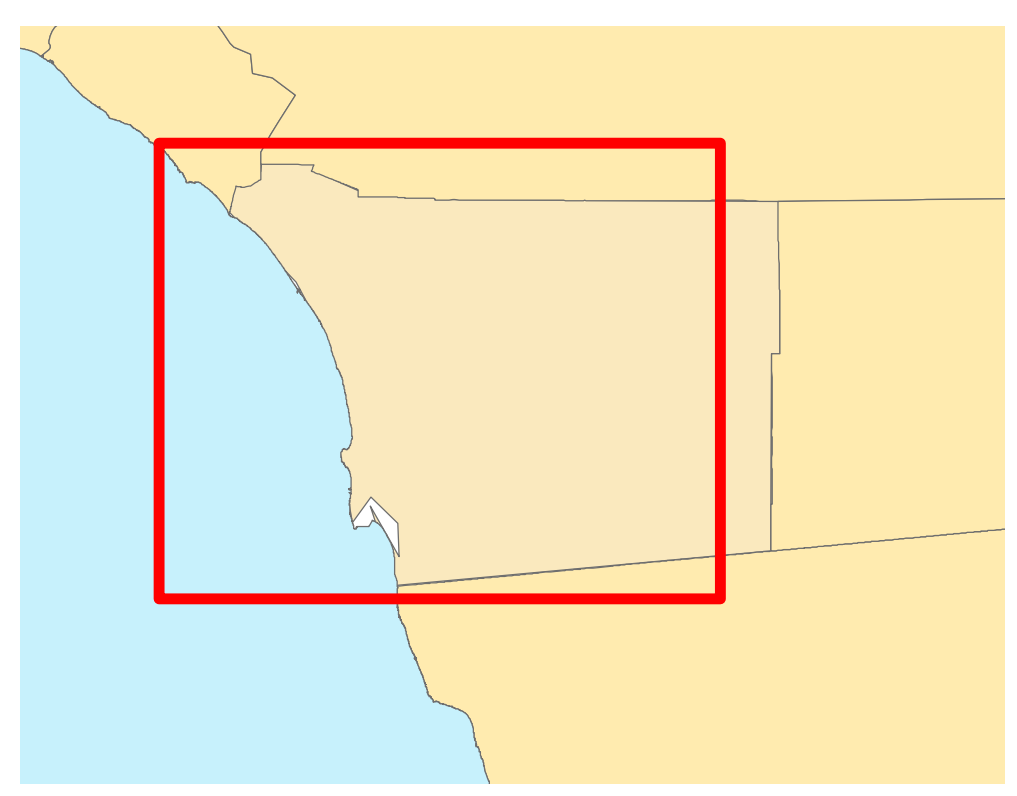
Perimeters from:
No Active Fires from
Modis Sensor
0600 10/27/2007,
WebEOC information,
City of San Diego Fire.



- Local Assistance Centers
- Shelters
- Road Closure
- Freeways
- Major Roads
- Thomas Bros. Pages
- Lakes
- Approx. Active Burn areas
- Approx. Fire Perimeters
- Approx. Mandatory Evac. Areas
- Approx. Re-Opened Areas
- Indian Reservations

Data Source: SanGIS

Disclaimer: This map is provided without warranty of any kind, either expressed or implied, including but not limited to, the implied warranties of merchantability and fitness for a particular purpose. This product may contain information from the SANDAG Regional Information System, which cannot be reproduced without written permission of SANDAG. This product may contain information which has been reproduced with permission granted by Thomas Brothers Maps. Copyright SanGIS. All Rights reserved.



Map Date: Month, Date, 2007
FILE: P-638-0008/stacks

