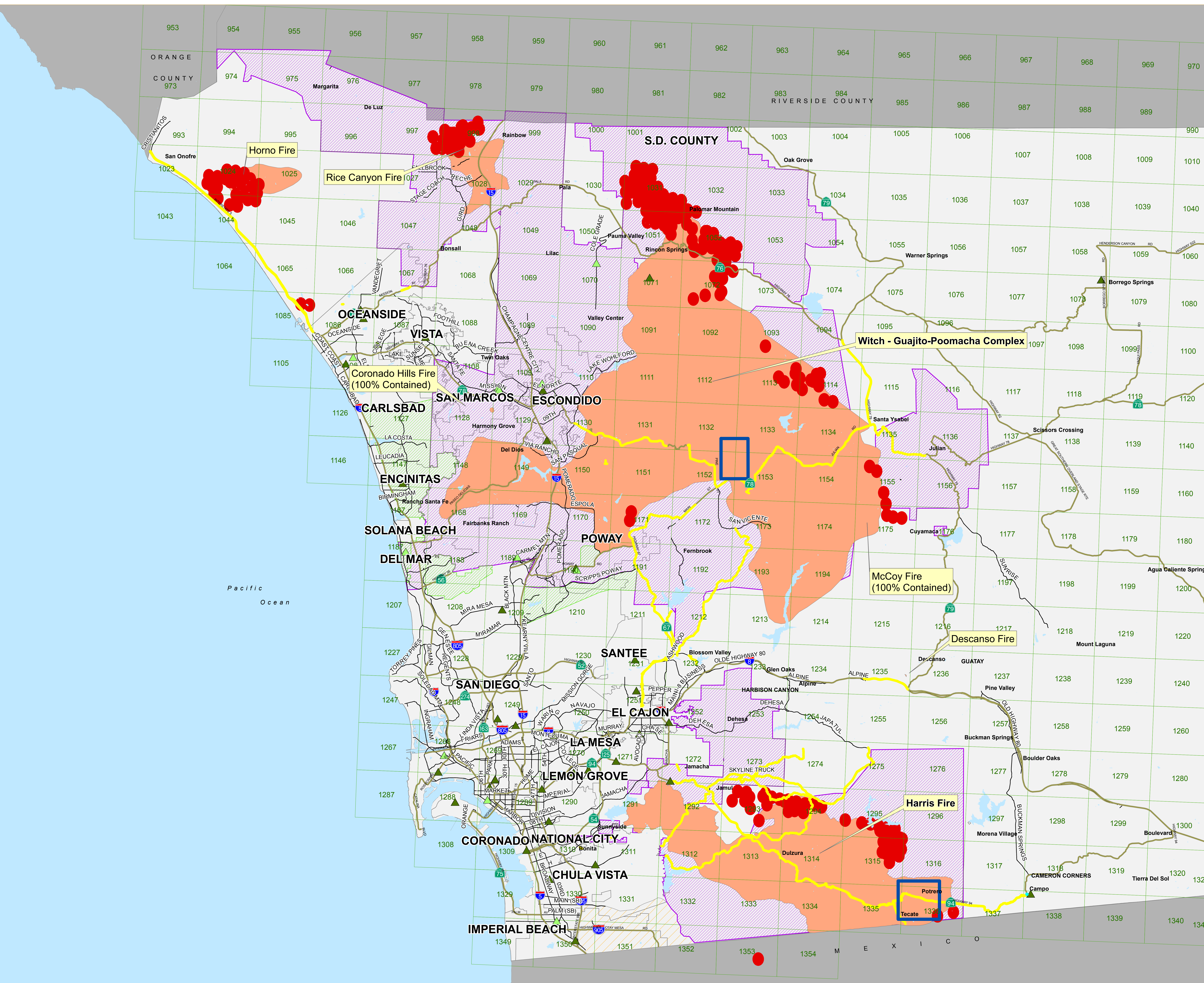


San Diego Active Fires
Last 24 Hours
0800 HRS UPDATE
October 24, 2007

Perimeters from:
MODIS Satalite Data
0600 10/24/2007,
WebEOC information,
City of San Diego Fire.



- TEMPORARY EVACUATION POINT
- SHELTERS
- ROAD CLOSURES
- MAJOR ROADS
- FREEWAYS
- THOMAS BROS. PAGES
- LAKES
- APPROX. ACTIVE BURN AREAS last 24 Hours
- APPROX. FIRE PERIMETERS
- APPROX. RE-OPENED AREAS
- APPROX. VOLUNTARY EVACUATION AREAS
- APPROX. MANDATORY EVACUATION AREAS
- DAMAGE ASSESSED AREA

Data Source: SanGIS
Disclaimer: This map is provided without warranty of any kind, either expressed or implied, including but not limited to, the implied warranties of merchantability and fitness for a particular purpose. This product may contain information from the SANDAG Regional Information System, which cannot be reproduced without written permission of SANDAG. This product may contain information which has been reproduced with permission granted by Thomas Brothers Maps. Copyright SanGIS. All Rights reserved.

