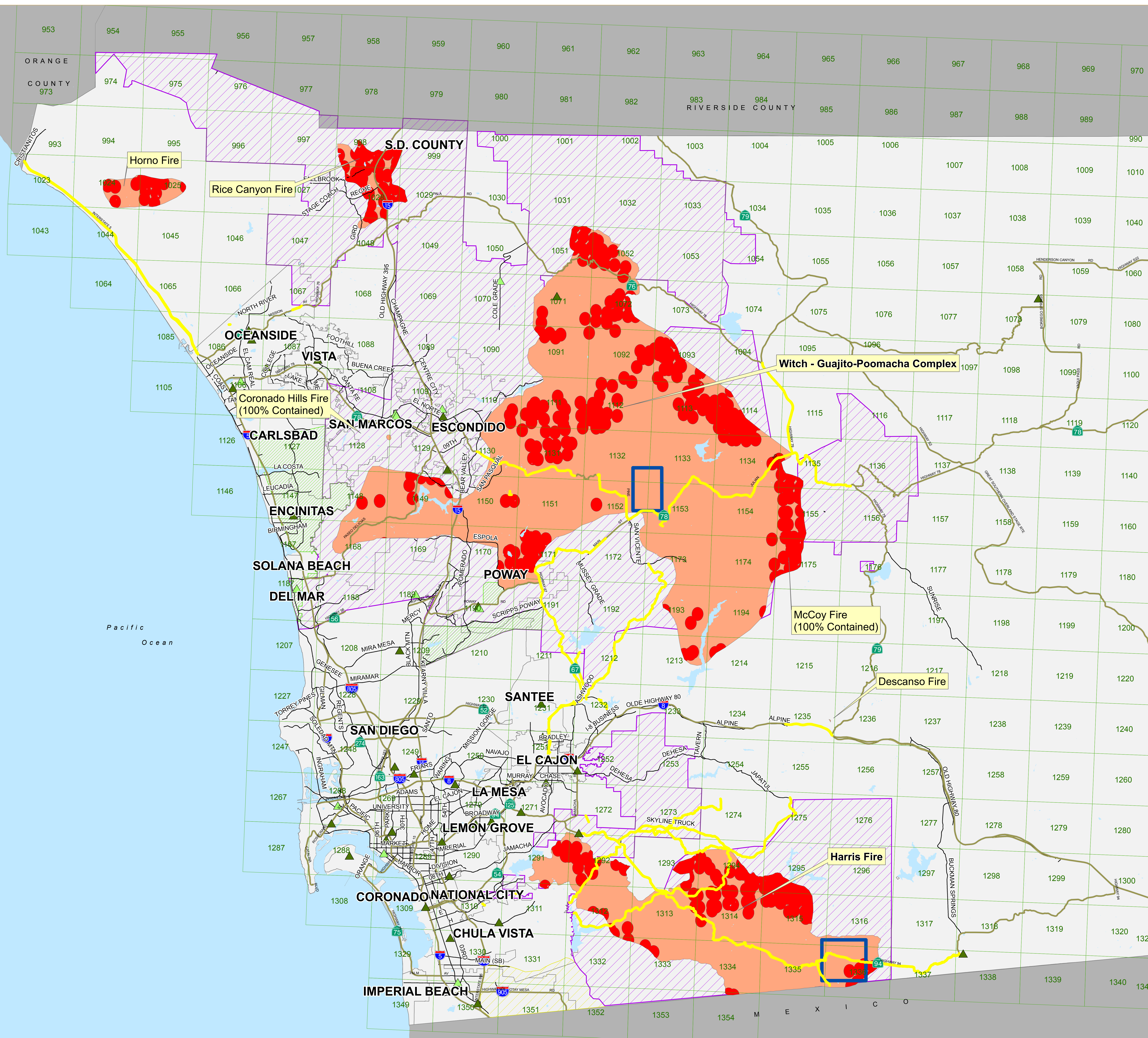


San Diego Fires  
0430 HRS UPDATE  
October 24, 2007

Perimeters from:  
CalFire briefings  
WebEOC information  
City of San Diego Fire



- TEMPORARY EVACUATION POINT
- SHELTERS
- ROAD CLOSURES
- MAJOR ROADS
- FREEWAYS
- THOMAS BROS. PAGES
- LAKES
- APPROX. ACTIVE BURN AREAS
- APPROX. FIRE PERIMETERS
- APPROX. RE-OPENED AREAS
- APPROX. VOLUNTARY EVACUATION AREAS
- APPROX. MANDATORY EVACUATION AREAS
- DAMAGE ASSESSED AREA

Data Source: SanGIS  
Disclaimer: This map is provided without warranty of any kind, either expressed or implied, including but not limited to, the implied warranties of merchantability and fitness for a particular purpose. This product may contain information from the SANDAG Regional Information System, which cannot be reproduced without written permission of SANDAG. This product may contain information which has been reproduced with permission granted by Thomas Brothers Maps. Copyright SanGIS. All Rights reserved.

